

Smart Wi-Fi LED Light Strip

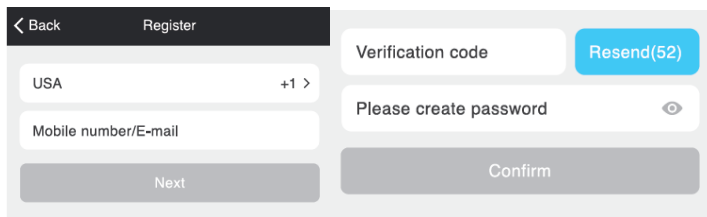
START GUIDE

Get Ready

- Know your Wi-Fi network and password
- Make sure your mobile device is running iOS 9 or higher or Android 5.1x or higher
- Make sure you are connecting to a 2.4GHz Wi-Fi network (Device cannot connect to 5GHz networks)
- Connect your phone to the same Wi-Fi network you wish to connect the devices to

First time using any Premier Smart Device:

1. Download “Premier Smart” App from App Store
2. Register a new account with your email address
3. Enter verification code sent to your email
4. Create a password
5. Create Family (also can be a Location Name) and rooms > Press “Done” top corner.



Device Setup

Plug the strip into the power. The strip should be quickly flashing 2 x per second white. If not reset strip.

How do I reset the device and what does the blinking light mean?

Reset the strip by pressing and holding the button for 3 seconds until the light is flashing rapidly.

- Reset one time: Turn off and on 3 times to reach Easy mode (Fast blinking, 2x per second)
- Reset again, turn off and on another 3 times to reach AP Mode (Slow blinking, every 3 seconds)

Wi-Fi Setup

Fast Mode

1. Open App and press the + sign in the top corner.
2. Select Light Strip
3. Confirm the strip is blinking rapidly white for easy mode (If not see reset procedure above)
4. Enter your Wi-fi password
5. Name the device

Light Strip Installation:

1. Cut towards end of strip to desired length if needed. (Only cut in marked areas)
2. Clean the surface where you want to apply the strip and make sure it is dry.
3. Remove the self-adhesive tape cover from the back of the strip
4. Apply strip where you want
5. Connect Wi-Fi module to strip (Line up arrow with + sign)
6. Connect other end into USB Power adapter (not included)



Light Strip Settings:

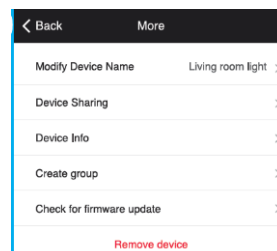
From your main device list, click on the device you want to edit, then press the pencil icon on the top right for advanced settings.

Device Name: Press to rename your device to something like “Bedroom” or “Kids’ Room”.

Remove Device:

Delete the Device from your account. Until it’s deleted, it will always be linked to your account.

Device Sharing: let friends, spouse, roommates, or family keep an eye on what your Devices see. Whether it’s a baby’s crib or the family dog, you can decide who gets to check in, access the Device, and set notifications.



How to use Light Strip

Open the strip you wish to control from the menu and turn it on

Change the Color

- Select the “White” tab for white color
- Select the “Color” tab for colors
- Under colors, move the Dot along the ring to change color
- Adjust the brightness and temperature with the bottom sliders

Scene (Allows for different moods or color combinations)

Edit a scene (not all scenes are editable)

Select the scene

Press the pencil icon to adjust the colors in the scene

Press the 3 little lines in the circle to adjust saturation, brightness, and speed



Schedule (To turn the strip on or off on a schedule, according to the last state it was on)

- Select “Scheduler”
- Select “Add Schedule” (at the bottom)
- Set the time you want the strip to be activated
- Set how often you want to repeat the task
- Set if you want the strip to turn on or off (You will need to make 2 schedules if you want the strip to turn on at a certain time and off at a certain time)
- Press Save (top right)

Smart Tab

Scene

Carry out a set of actions when you click the button, like turn on multiple devices on or off at the same time

- Press the + sign in the top right corner
- Edit the name of the scene by clicking the pencil icon
- Change the background image of the scene by pressing the photo icon
- Click the + symbol to add a device to control in the scene
- Select the function you want that device to perform
- Select if you want to put a shortcut to the scene on the home page.
- You can do this for multiple devices you want to control all at once

Automation

Performs certain actions when certain conditions are met (If this then that)

- Press “Add Automatic Action” in the middle or the + sign in the top right
- Edit the name of the automation by clicking the pencil icon
- Change the background image of the automation by pressing the photo icon
- Select the option if you want any or all conditions met
- Press the + sign to add a condition
- Select a condition
- Select the condition options
- Select “Next” upper right-hand corner
- Press the + sign next to “Carry out the following actions”
- Select the action or device you wish to activate
- Select the option you want to happen
- Select the valid time period
- Press “Save” top right-hand corner

Frequently Asked Questions

1. Can I share with family and friends?

Yes, you can share your Devices with family and friends who will have access to view the Device and control your strips, plugs, and other Premier devices. In the Premier app, press the Profile button and click on the “Device Sharing” button, and you will be able to give or revoke sharing permissions. In order to share, the other user should already have downloaded the Premier app and registered a new account.

2. Can I group multiple Premier devices together?

Yes, you can group multiple devices of the same type together, by room, location, or however else you want. The same devices can be in multiple groups. For example, create a group for “Bedroom” and another group for “Entire House”, and your Bedroom lights can be included in both groups. From your main device list, click on one of the devices you want to group, press the “...” button on the top right for advanced settings, and click Create Group. You’ll then be able to choose which devices you’d like to group together and will be able to rename them.

3. How Many Devices Can I Control?

Premier’s app can control an unlimited number of devices in an unlimited amount of locations. Your router may have a limit of how many devices can be connected to one router.

5. My Premier device has a funny name. How do I rename it?

From your main device list, click on one of the devices you want to rename, press the “...” button on the top right for advanced settings, and click Modify Device Name. You’ll then be able to choose a more familiar name.

6. The strip appears offline or unreachable, what should I do?

Make sure your Wi-Fi router is online and in range. Make sure you have the latest functionality by clicking “Check for firmware update” in your device settings.

7. What’s the Wireless Range?

The range of your home Wi-Fi is heavily dependent on your home router and the conditions of the room. Check with your router specifications for exact range data.

8. If my Wi-Fi/Internet goes down, will Premier still work?

Premier products need to be connected to Wi-Fi in order to use them remotely.

Troubleshooting

- **Cannot connect to your Wi-Fi network.**
 - Make sure you entered the correct Wi-Fi password during the Wi-Fi setup. Check whether there are any Internet connection problems. If the
 - Wi-Fi signal is too weak, reset your Wi-Fi router and try again.
 - Wi-Fi network is 2.4GHz (not compatible with 5GHz Wi-Fi networks)

System Requirements

- Mobile device running iOS® 9 or higher or Android™ 5.1x or higher
- Existing 2.4GHz Wi-Fi Network

Technical Specifications

- Length 6.56 Feet (2 meters)
- 60 LEDs
- RGB Multi Color
- Indoor Use Only
- Installs with Self-Adhesive Tape
- Control with your voice using Alexa or Google Assistant
- Requires 5V / 1 Amp USB Power Adapter (not included)
- Wi-Fi: IEEE 802.11N, 2.4GHz (not compatible with 5GHz Wi-Fi networks)

Important Information:

Before installing or replacing a strip, read and follow all precautions, including the following:

CAUTION: RISK OF ELECTRIC SHOCK OR BURNS – USE IN A DRY LOCATION ONLY.

Do not install the device with wet hands or when standing on wet or damp surfaces. Suitable for use in operating environment between -20°C and 40°C (-4°F and 104°F). Not for use in totally enclosed luminaires. Do not use with dimmers. Please make sure the voltage of the LED strip is compatible with the main electricity of your country before connecting to a strip holder. Ensure that the base of the strip matches the strip holder. This device uses a non-replaceable light source. When the light source reaches the end of its life cycle, the device should be replaced.

FCC Notice:

This device complies with Part 15 of the FCC Rules. Operation is subject to the two following conditions:

1. This device may not cause harmful interference.
2. This device must accept any interference received, including interference that may cause undesired operation.

Note: This equipment has been tested and found to comply with the limits for a Class B digital device, pursuant to Part 15 of the FCC Rules. These limits are designed to provide reasonable protection against harmful interference in a residential installation.

WARNING: This product contains chemicals known to the State of California to cause cancer and birth defects or other reproductive harm.

Made in China